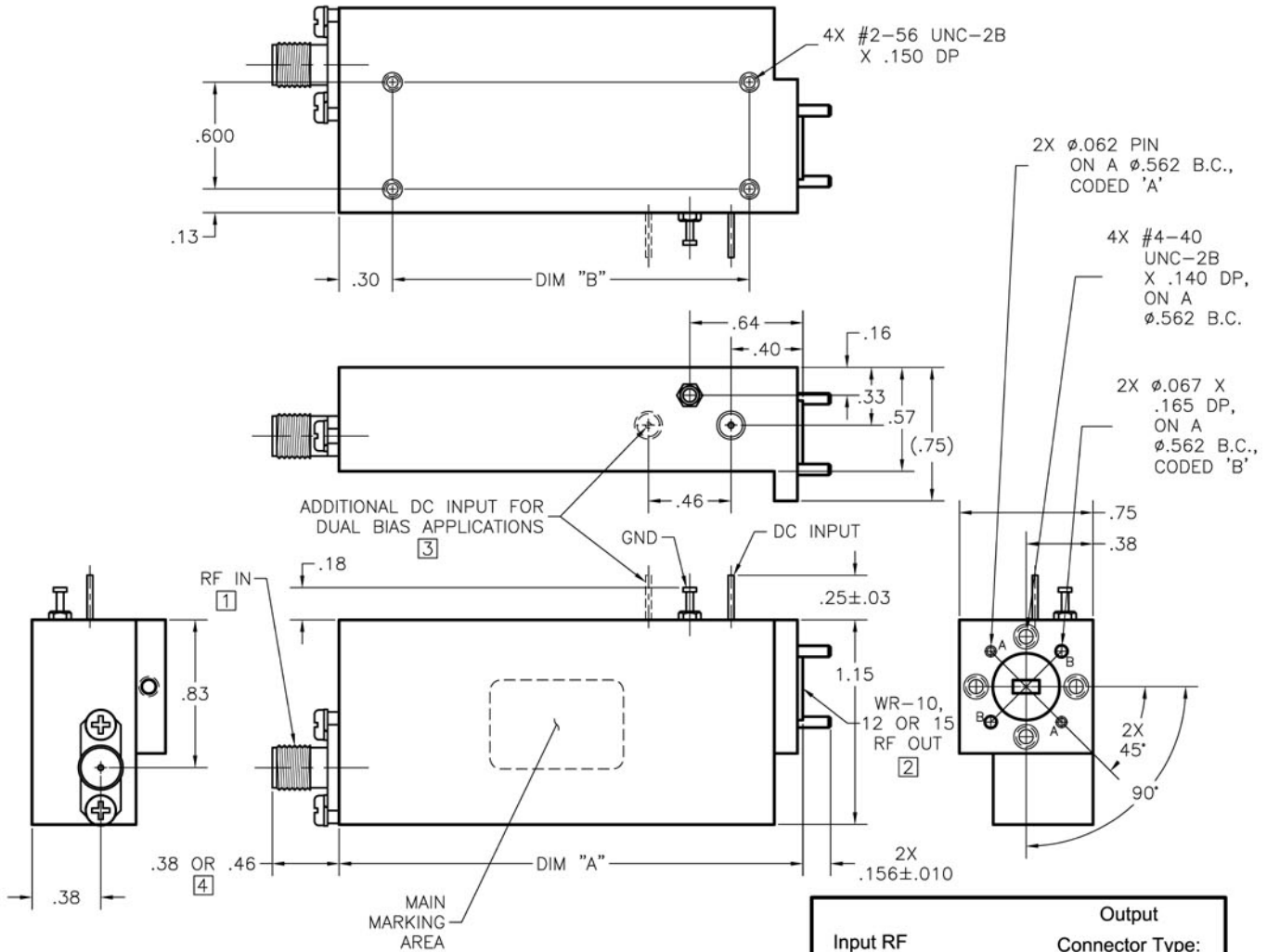


# RF CONNECTOR IN / WR-08/10/12/15 WG OUT MULTIPLIER



NOTES: (Unless Otherwise Specified)

- [1] RF CONNECTORS ARE SMA, 2.92mm OR 1.85mm FEMALE.
- [2] RF OUTPUT CONNECTORS ARE WR-08 (UG-387/U-M FLANGE), WR-10 (UG-387/U-M FLANGE), WR-12 (UG-387/U FLANGE) OR WR-15 (UG-385/U FLANGE) WG.
- [3] ONLY USED ON PACKAGE NUMBERS ENDING IN "D".
- [4] CONNECTOR DIMENSIONS: SMA & 2.92mm FEMALE ARE .38". 1.85mm FEMALE IS .46".

UNLESS OTHERWISE SPECIFIED DIMENSIONS ARE IN INCHES. TOLERANCES ARE: .XX $\pm$ .02 .XXX $\pm$ .005

## Case Outline Example

PACKAGE#	DIM "A"	DIM "B"
__06__	1.73	1.125
__10__	2.61	2.005
__13__	3.21	2.605

Input RF Connector:	Output Connector Type:
S=SMA	08=WR-08
K=2.92mm	10=WR-10
V=1.85mm	12=WR-12
M=Multiplier	15=WR-15

SF10M15S

Input Connector Type:	Bias Pin Configuration:
M=Male	S=Single Bias
F=Female	D=Dual Bias